

InstaClad[®]
EXTERNAL WALL INSULATION SYSTEM

A guide for installers
and residents



InstaClad

awarded

**INNOVATION
STATUS**

EC04

**THE GREAT
BRITISH
INSULATION
SCHEME**




InstaGroup

www.instagroup.co.uk



InstaClad

awarded

**INNOVATION
STATUS**

ECO4

**THE GREAT
BRITISH
INSULATION
SCHEME**

InstaGroup's External Wall Insulation systems

InstaClad Robust is designed and manufactured by InstaGroup, a UK leader in energy efficiency. Installing InstaClad External Wall Insulation (EWI) warms up cold homes, saves energy and reduces household bills. The outside walls are refurbished during the process.

InstaClad awarded Innovation status

Innovation status has been awarded to InstaClad Robust EWI systems in recognition of their high performance compared to the measures currently deliverable under ECO.

The Innovation award provides a 25% uplift for funding through ECO4 and the Great British Insulation Scheme. This extra funding makes InstaClad available for Social Housing with a D-rated EPC.

Guidelines on After Care

With professional installation and the right after-care, the insulation system should last for many years, and bring many benefits to the home.

InstaClad Robust requires very little maintenance, but please read the 'After Care' section of this brochure to ensure the system continues to perform at its best.

How does InstaClad work?

Typical home insulation means filling the brick wall cavities with insulation to help keep in the heat. However, if a property is built with solid walls, or has cavity walls that cannot be insulated, an internal or external wall insulation system can be installed to stop heat loss.

InstaClad External Wall insulation is fixed to the outside of the house, which not only keeps the inside room temperature warmer, but also the inner part of the wall. This effectively acts as a heat store, helping to maintain a constant temperature inside the house and avoiding fluctuations between hot and cold.





About InstaGroup systems

InstaClad Robust EWI systems have been designed to improve the energy efficiency of homes like yours.

InstaClad Robust provides a durable and tailored solution backed by professional consultancy, technical expertise, a product warranty from InstaGroup along with a 25 year guarantee issued by SWIGA.



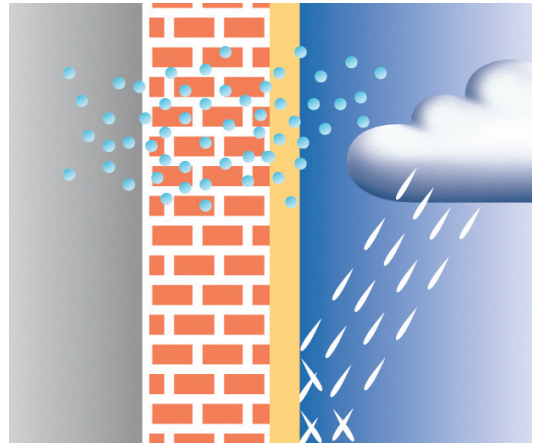
← This image shows the elements that make up an InstaClad External Wall insulation system and how they are applied to the outside walls of a house.

The benefits of External Wall Insulation

Once a home is externally insulated, it should stay warmer and have fewer draughts.

The advantages for you and your home:

- A significant reduction in heat loss which lowers energy use and heating bills.
- A decrease in issues in the home such as condensation, damp and mould, which can cause respiratory and other health problems.
- The system protects the outside of the property from weather damage, reducing maintenance.
- The external render improves and refreshes the outside look of the home.
- If the system needs any maintenance or repair work, it can be carried out externally, causing minimal disruption to home life with no need to move out.

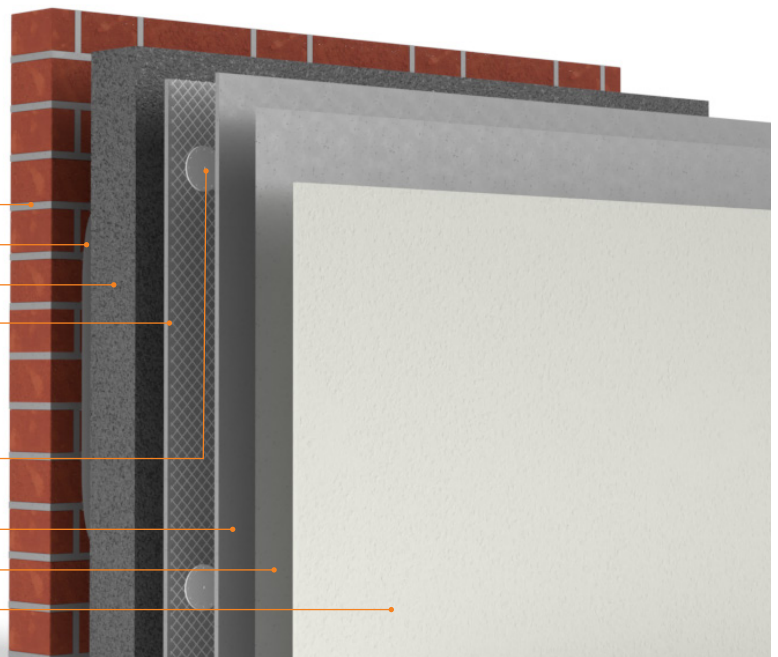


The External Wall insulation system protects the wall from rain, yet 'breathes'. So rain and wet is kept out, but internal moisture can escape through the wall to minimise condensation in the home.

InstaClad System

EWI System Components:

1. Substrate
2. Adhesive mortar
3. EPS board
4. Mineralic reinforcing coat
(Glass fibre reinforcing mesh embedded into the mineralic reinforcing coat)
5. Supplementary mechanical
dowel fixings
6. Mineralic reinforcing coat over mesh
and dowel fixings
7. Primer
8. Silicone render, dash or brick slip finish



After Care

Looking after your External Wall insulation system



InstaClad Robust requires no more checks or maintenance than a typical brick-built home.

However, as the insulation system has been installed under the Energy Company Obligation scheme (ECO4), post-installation inspections will be carried out for the first 25 years.

After an InstaClad installation

The home will be kept warm and protected for many years ahead. All that's needed is a few simple checks and some straightforward precautions.

Keep an eye on the outside walls

Whilst the system is very robust, the exterior finish is susceptible to minor surface damage if knocked with items such as ladders and bicycles. Inspect the system every year by taking a walk around the house.

Any of the following issues should be dealt with as quickly as possible:

- Cracked or failing mastic seals around windows, doors, flues, etc.
- Poorly maintained water goods, such as downpipes, gutters and overflow pipes leaking on or into the system.
- Cracks of any kind.
- Impact damage from wheelie bins, bicycles, balls, etc.
- A more thorough inspection of the system (e.g. including window sealants) should be undertaken every 10 years.



If you notice any abnormalities or malfunctions with the system we recommend that you contact us without delay so we can resolve the issue as soon as possible.

After Care

Avoiding damage to the External Wall Insulation system

InstaClad Robust is similar to a typical brick or rendered wall. However, there are some things to avoid in order to prolong the life of the system and make sure the home stays warm and dry.

A rendered finish may show light soiling after a time. This does not affect the system's performance, but householders may wish to clean the surface.



Do not scrub the system's surface aggressively or use chemical cleaners.

Any cleaning should be done with a soft brush and warm water with a mild household detergent.

Do not expose the wall to solvents.

Standard graffiti removal cleaners may not be suitable for use on the wall finish. Please refer to the system manufacturer if required.

Do not attempt to overpaint the system yourself.

If soiling remains visible after cleaning, you may wish to arrange for professional cleaning or overpainting.

The surface must be re-decorated with the manufacturer's recommended finish; using 'off-the-shelf paint' will affect durability and invalidate the warranty.

Do not apply fixings through the External Wall system.

e.g. for hanging baskets, burglar alarms, satellite dishes, aerials etc.

This could damage the integrity of the system and affect the warranty.

External fixings are best left to a professional installer or building professional, as each wall fixture will require different types and lengths of fixings, additional load support and appropriate sealants.

Take care with minor additions to the outside walls.

If you want to make small penetrations such as using tacks to attach cables, trellises or climbing plants, these can be inserted through the render. Please note however that climbing plants are not advised due to potential discoloration to the top coat finish.

Ensure a clean penetration and try to avoid making several attempts or causing additional damage to the render. For added protection, cover each fixing and surrounding area with a good quality acrylic sealant.

Do not use heat sources close to the wall.

e.g. barbecues, gas patio heaters, blow torches.

Do not allow plants to take root behind the system or penetrate through any drainage holes.

Plants, climbing plants, trees and soil can cause staining to the finish. Regularly wash affected areas to avoid long-term build-up of dirt and algae.

Avoid impact from sharp or heavy objects that could damage the system.

The system is designed to be robust but can be damaged by heavy knocks or continuous impact. (e.g. wheelie bins, bikes).

Do not lean bicycles against the wall for long periods as it can cause damage and staining.

Ensure that ladders are used and placed with care, using soft pads to help prevent surface damage.

Guidance on Major Works



Do not use an abrasive brush or chemical cleaners on window and door frame seals.

Check the silicone seals every year to ensure they are in good condition. If needed, these can be wiped clean with standard water.

Leaving the seals untreated or using unsuitable cleaning materials will affect the durability of the system and invalidate the warranty.

Seals should never be replaced without consultation with the manufacturer.

Don't allow water to drip continuously onto or over the wall surface.

Water leaks may occur at downpipe joints, overflowing gutters, overflow pipes etc. These can cause staining and should be repaired without delay.

Advice on making small repairs.

Small patches of surface damage to the system can be re-rendered with material sourced from the original installer or system manufacturer. Do not use render that is not approved with this system.

Remove any flaked or damaged render and brush in new render ensuring good coverage and overlap of the joints. Please note, due to weathering, it is difficult to achieve a full colour match in these areas.

Do not carry out your own renovations as this may affect system performance.

This includes the addition of lean-tos, porches, conservatories, replacing windows or doors etc.

Always consult and use a professional builder.

Do not use render that is not approved with this system.

If the system requires Major Works such as repairing a large area of surface damage or re-rendering, the material used must be sourced from the original installer or system manufacturer.

Always contact the installer to ensure the surface can be sealed, re-primed and rendered with suitable materials.

Do not attempt 'DIY' on your External Wall system.

Damage that has penetrated the board and broken the insulation will need to be referred back to the installer. What looks like remedial works can be Major Works. We do not recommend that you try to fix damage yourself.

Always contact the installer and the system manufacturer

If you need to add additional pipe work or cables, or install new windows and doors within the External Wall system.

The installer and system manufacturer will need to be consulted two weeks prior to works commencing. An install method needs to be agreed, and all remedial works are to be undertaken by the system installer under the instruction of the manufacturer.

Protect your warranty

If Major Works are undertaken without prior consultation with the installer and/or the manufacturer, all warranties and guarantees will become null and void.



UK Head Office
Insta House, Ivanhoe Road
Hogwood Business Park
Finchampstead, Wokingham
Berkshire RG40 4PZ
United Kingdom



+44 (0)118 932 8811



info@instagroup.co.uk



www.instagroup.co.uk

