

alsecco  
Partner Plus  
In Action



**alsecco** – The experts in  
solid wall insulation



With over 60 years' experience in the design, manufacture and installation of solid wall insulation (SWI) systems; and more than 25 years in the UK, alsecco's expertise is unrivalled in the industry.

Supported and backed by the German DAW group, with sales exceeding one billion, alsecco are the experts in providing technical and proven SWI solutions to a vast array of markets and sectors.

More pertinently, alsecco are providing these solutions for the residential construction sector to support the refurbishment and renovation of millions of thermally inefficient properties in the UK. Vital to the Government's drive to reduce CO<sub>2</sub> emissions and improve the energy efficiency of buildings, alsecco understands the funding available currently.

Established partnerships with regional contractors and the energy providers, set alsecco apart in its aim to forge links between funding providers and those requiring monies to renovate and upgrade their housing stock in line with Government targets.

It would be simple just to supply the system, but alsecco see the importance of a complete refurbishment solution for clients which goes beyond this. Combining its knowledge and expertise in SWI with its ethos of strong service, delivery capabilities and network of regional contractors, alsecco provides a service which evaluates the property, makes recommendations, assists in product specification and offers a service of life time care.



**alsecco** – Partner Plus  
What it means to you!



Through alsecco Partner Plus we will partner you for their refurbishment, renovation, long-term maintenance and value enhancement of your housing stock. Combining efficiency modelling and project planning specifically designed for the residential sector, alsecco Partner Plus is the “one-stop-shop” solution for your refurbishment programme.

**The “one-stop-shop” solution for the residential construction sector**

Our new alsecco Partner Plus efficiency modelling and project planning programme allows us to offer you a tailor made solution for your residential refurbishment project – from property surveys to installation with accredited contracting partners, to long-term maintenance.

Our modular packages allow you to create a bespoke solution to meet your individual needs but with the guarantee that we will partner you through the process from start to finish... and beyond!

**alsecco Partner Plus – at a glance**

**Property survey and assessment:**

Thermal imaging instantly highlights energy inefficiency

**System design and specification:**

Identifies the correct solid wall insulation solution for you, provided computer generated images.

**Project costs:**

Competitive and transparent  
Competitive funding bid – we compile and submit bids to you

**Project planning and installation:**

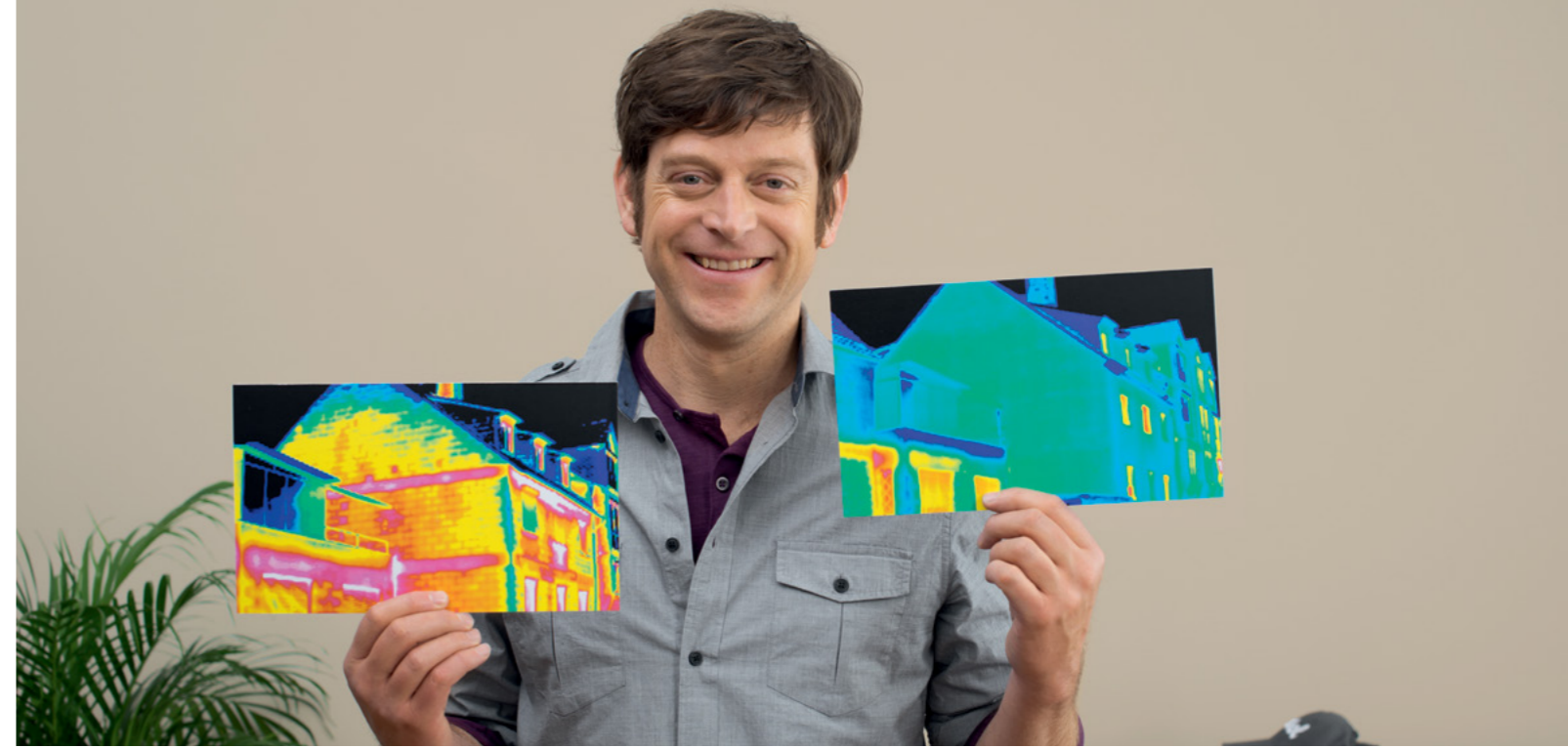
Working only with contracting partners and alsecco-accredited applicators

**Inspection, maintenance and warranty:**

A service of life time care



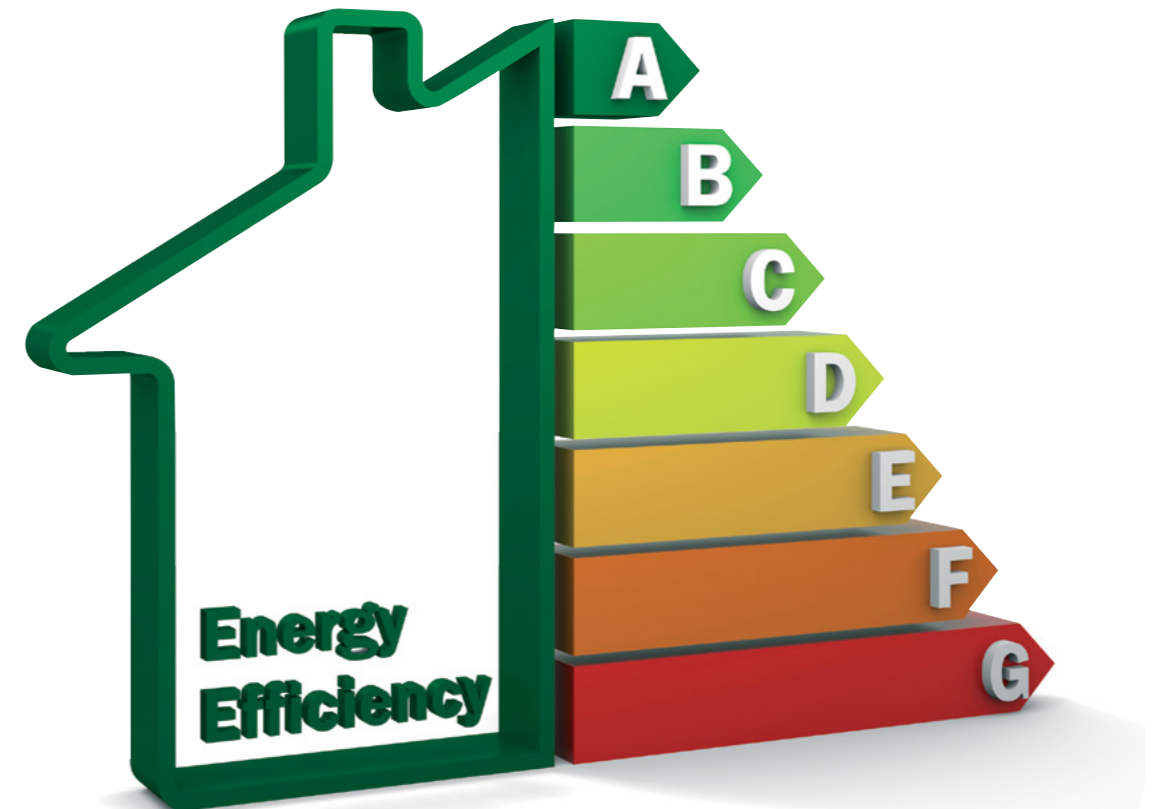
**alsecco** – Accurate and detailed property evaluation



### Property survey and assessment

alsecco Partner Plus starts with an evaluation of the property's current condition. Undertaken by our in-house trained assessors, an accurate and detailed description of the property's thermal condition is produced so that considered and precise recommendations can be made.

A Retrofit Coordinator will be the individual who will be responsible for overseeing the casement of the dwelling as well as subsequent specification, monitoring and evaluation of energy efficiency measures, in accordance with the requirements of PAS2035.



**alsecco** – The total works package



**System design and specification**

alsecco gives you peace of mind that the materials specified for your project have been fully BBA and Ofgem approved and draws on its vast experience to assist in specifying the right solution for your particular scheme.

With our industry-leading portfolio of products and systems adhering to the most stringent technical and planning regulations, we can ensure not only the perfect SWI solution but also its exacting installation by working closely with our regional contracting partners.

**Project costs**

Working with our regional contracting partners we will compile a schedule of budget costs for ALL elements of the works package. Ensuring competitive, transparent tendering, we personally ensure the monies available are used to the best effect.

**Competitive funding bid**

Through a close network of energy providers, funding intermediaries and procurement vehicles, we will identify funding possibilities and alternative revenue streams available to you.

By working with specialists in this area, we can ensure that the opportunities to maximise contributions to your program, are delivered upon.

Reaching all areas of the funding markets, we can ensure your project is thoroughly evaluated and you are receiving the best possible rates.



**alsecco** – Accredited applicators  
& life time care



### **Project planning and installation**

Working in conjunction with our regional contracting partners we ensure a smooth project implementation. We only use alsecco-accredited applicators, trained in-house in the application and technical capabilities of alsecco products and systems. We also provide close liaison with the site and make regular visits and inspections. If you have an applicator you prefer, or wish to use you in-house installation teams, we can make sure they attend our accreditation training facility (free of charge).



### **Inspection, maintenance and warranty**

On completion of the works, a full inspection is carried out. From here on, the focus is to maintain the fabric of the building and provide lasting protection for the facades. Regular inspections of the building are important so that minor imperfections can be identified early on before they have the potential to turn into larger problems.

alsecco Partner Plus concentrates on the long-term maintenance of the building. Our lifetime care package is tailored to ensure your building retains that “just-applied” appearance and performance for the maximum period. Our warranty gives you the peace of mind that in the unlikely event of a time-related failure, alsecco will address the issue immediately, regardless of how small.



**alsecco** – A partner you  
can trust



As part of the DAW Group, alsecco have over 60 years' experience in the design, manufacture, supply and installation of solid wall insulation systems. All systems are independently tested and certified.

alsecco are with you every step of the way through the alsecco Partner Plus program from liaising with the utility companies and submitting funding bids, to specifying the correct system, in addition to training and accrediting applicators to install the systems correctly and to the highest standards.

We value, support and work with our partners and customers and jointly inspect completed projects with all parties and we are confident in our life time care program.

Through the alsecco Partner Plus program we ensure that you can rely on our expertise and practical experience whenever you need it and are flexible and adaptable to work with you according to your own individual requirements.

Every refurbishment and renovation project is different and through the alsecco Partner Plus program, alsecco offers versatility in being able to provide the project its individual, technical, aesthetic and logistical requirements, ensuring you get the right solution to enable you to meet your goal quickly and effectively.



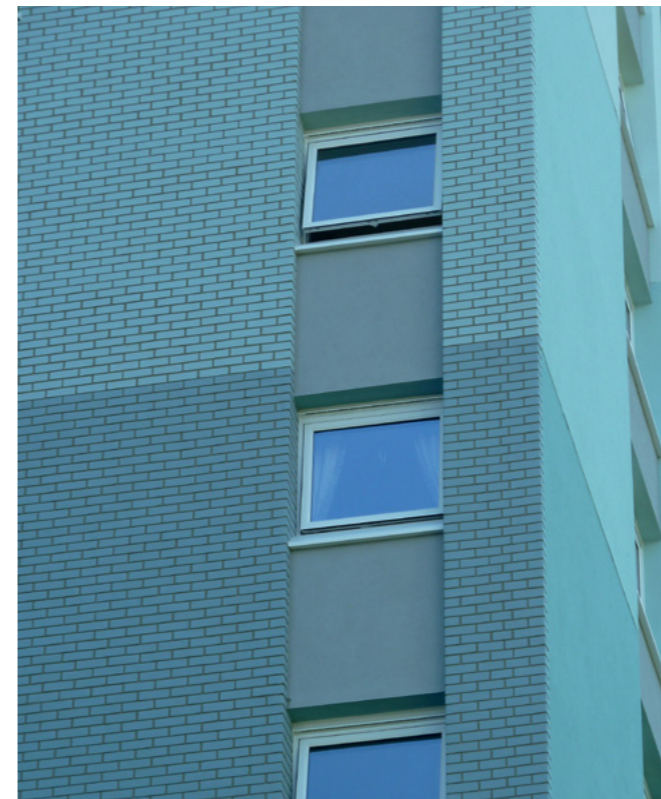
alsecco – Partner Plus  
in action



**Stafford & Rural Homes** Basic 1 & Basic 4 Systems consisting of 100mm EPS insulation boards. The ground floor area makes use of acrylic brick slips, while a Silitect T 1.5 finish has been applied to the first floor.



**Dundee** - Dundee Basic1 system consisting of 100mm Enhanced EPS. The alsecco system has been installed to over 2500 units across various locations. The ongoing project has not only improved the aesthetics but fundamentally the thermal efficiency of the existing building.



**Yeaman & Broughton House**, Bristol Ecomin 400 & Ecomin 300 system consisting of 150mm Mineral wool insulation boards. Finished with clay & acrylic brick slips in various shades of blues. The Ecomin 300 render system has been colour matched to stay in keeping with the brick slips.



**Bucknall New Road** Ecomin 300 & Ecomin 400 system consisting of 100mm Ecomin insulation boards with Staffordshire blue clay brick slip to ground floor. The first floor up boasts a gradient effect in an array of cream and grey colours created using a silitect T 1.5 finish.

Please contact us for further case studies in the system you require.



