



# Awards 2015

A Celebration of EWI Innovation and Excellence



## Award Winners | 2015

Showcasing the best in External Wall Insulation

# ALUMASC

FACADE SYSTEMS

Innovation...  
Transformation...  
Inspiration...



## External Wall Insulation Solutions

Creating thermally efficient, attractive buildings and homes

Alumasc is the UK's leading manufacturer of high performance External Wall Insulation, Render & Brick Slip Systems, with a proven track record in both new build and refurbishment projects. Our facade systems provide long-term weather protection, outstanding thermal performance and offer a range of attractive finishes.

Alumasc EWI systems are supported by comprehensive technical advice, fully trained registered installers and long term warranties.



For technical advice or product literature,  
call Alumasc on +44 (0) 3335 771 700

[www.alumascfacades.co.uk](http://www.alumascfacades.co.uk)

# A Celebration of EWI Innovation and Excellence

The Insulated Render and Cladding Association (INCA) Awards recognise the outstanding external wall insulation (EWI) projects delivered by INCA members over the past year.

All this year's finalists demonstrate the vital role for EWI in improving the energy efficiency of buildings, lifting households out of fuel poverty, and transforming local communities. They are at the forefront of innovation and design and the winners in particular reflect the highest quality standards.

## The Judges

**Gearóid Lane (Chairman)** - Formerly a member of the British Gas Executive Committee, now co-founder and CEO of AgilityEco specialising in the delivery of energy service solutions to both public and private sector clients.

**Claire Curtis-Thomas** - With a degree in Mechanical Engineering and an MBA, championed a number of issues on behalf of the construction industry as a former MP and is now the CEO of the BBA.

**Paul Gaze** - A Chartered Builder who is currently a Strategic Relationship Manager at CITB working in partnership with specialist stakeholders, such as INCA, to support the development and delivery of training and assessment.

**Richard Mellish** - Joined DECC when it was formed in 2008 and is now Deputy Director for Household Energy Use with responsibility for the delivery of schemes designed to improve the energy efficiency of the UK housing stock.

**David Pierpoint** - CEO of award-winning retrofit training provider CoRE, the not for profit national Centre of Refurbishment Excellence.

**Ruud Van Eersel** - With over 25 years' experience in the painting and cladding industry, co-founded the Belgian Working Group of ETICS in 2008 and is President of the European Association for ETICS.

## Inside...

Supporting the EWI Industry	2
Outstanding Achievement	2
Project of the Year	4
Domestic Refurbishment – High Rise	6
Domestic Refurbishment – Low Rise (6 houses or more)	8
Domestic Refurbishment – Low Rise (5 houses or fewer)	12
Domestic New Build	14
Non-Residential	18
INCA Sustainability Award	22
INCA Training Award	23

## Insulated Render and Cladding Association (INCA)

t: 0844 249 0040

e: [info@inca-ltd.org.uk](mailto:info@inca-ltd.org.uk)

w: [www.inca-ltd.org.uk](http://www.inca-ltd.org.uk)

© INCA Ltd 2015 all rights reserved.

Printed on recycled paper.

Sponsored by:





# Supporting the EWI Industry

**It is an honour to be the chairman of INCA at such a critical time for the EWI industry and I look forward to working with our members and partners to create a business environment in which we can all thrive.**

The EWI industry remains faced with the challenges of an ever changing energy efficiency market following the general election in May. After the ECO targets for solid wall insulation (SWI) were cut by more than 75% last year, customers planning energy efficiency improvements were left with the uncertain experience of the Green Deal Home Improvement Fund (GDHIF), which was finally stopped along with funding for the Green Deal over the summer.

INCA continues to push for a sustainable long-term energy efficiency framework and this has now been recognised by Government as central to its commitment to insulate a million more homes over the next five

years and tackle fuel poverty. As set out in the INCA Manifesto published at the start of 2015, this new long-term framework must support the delivery of EWI on a large scale to make a meaningful start on addressing the eight million households in Britain living in solid wall properties including almost half of the fuel poor.

Against this backdrop of uncertainty, I am particularly impressed by the achievements of INCA members in this year's INCA Awards, which include both life-changing refurbishment projects and innovation and design in the new build sector. This year's winners clearly show how EWI can help to reduce carbon emissions; restore pride in local living and working

environments; and support stronger and more sustainable communities.

Ultimately, it is the people that makes the EWI industry a specialist sector to be proud of and I am delighted that there is a brand new Outstanding Achievement Award for 2015, which recognises an individual who has made a real difference to the EWI industry over a long and distinguished career.

**Pádraig Barry**  
INCA Chairman



## Winner | Outstanding Achievement

**A pioneer for energy efficiency for almost 25 years, Mitch Gee was instrumental in first bringing together the EWI offer for Rockwool, a system that has gone from strength to strength in the UK market, and then taking SPSenvirowall from a small loss-making company to the second largest EWI supplier by volume in the UK.**

Strong in will, funny in character and genuine in heart, Mitch is a leading and respected figure in the EWI industry who is never stuck for a comment whatever the topic! The Judges unanimously agreed

that his commitment to INCA combined with his passion for quality and innovation in the EWI industry makes him a deserving winner of the first Outstanding Achievement Award.

**Mitch Gee**  
SPSenvirowall



# INCA

## Insulated Render and Cladding Association



Representing the major system designers, a nationwide network of specialist installers, and the key component suppliers in the external wall insulation (EWI) industry.

Using an INCA member provides clients with confidence that they are working with a reputable Specialist Contractor that meets recognised standards of competence.

### Exclusive range of benefits

- ✓ High level representation and first point of contact for Government and other key stakeholders
- ✓ Members with a proven track record of financial and technical delivery
- ✓ Commitment to health and safety and a qualified workforce
- ✓ Wide-ranging business support
- ✓ Up to date guidance and information
- ✓ Forum for sharing best practice
- ✓ UK member of the European Association for External Thermal Insulation Composite Systems (EAE)

## Join INCA today!

**t: 0844 249 0040**

**e: [info@inca-ltd.org.uk](mailto:info@inca-ltd.org.uk)**

**w: [www.inca-ltd.org.uk](http://www.inca-ltd.org.uk)**



Energy  
Efficiency  
**Partnership**  
for Buildings

# Project of the Year

## **NORTHUMBRIA SPECIALIST EMERGENCY CARE HOSPITAL CRAMLINGTON**

**System Designer:**  
Dryvit UK Ltd

**Contractor:**  
Horbury Building Systems

The Northumbria Specialist Emergency Care Hospital in Cramlington was awarded Project of the Year in the INCA Awards 2015 for its ambitious and striking finish which helped to set it apart from the other worthy winners.

The judges were impressed by the technical complexity of the project which was achieved using the Dryvit Outsulation EWI system. This system provided a high degree of design freedom to deliver the large proportion of challenging curved areas on the geometrically interesting building. It also achieved the crisp white and blue rendered finish required by the client.

This innovative and exciting new build project not only delivered a stand out finish but achieved an impressive thermal performance of 0.19 W/m<sup>2</sup>K.



*“This unusual and technically challenging EWI project really makes a statement”*



www.kinnelleco.co.uk

# NEW INSURANCE PRODUCTS

Following the recent launch of ECO2 - we at Kinnell ECO have reviewed and extended the range of insurance products you can use, so that you can continue to provide a robust consumer protection proposition to your customers.

As such we added a 10 year insurance backed guarantee for non-funded insulation contracts to our product range.



This insurance product is available in addition to the existing 25 year insurance product for ECO funded installations, which should continue to be used where the installation attracts funding.

## OUR INCA MEMBER PRODUCT RANGE IS NOW AS FOLLOWS:

25 year ECO 'Appropriate Guarantee' for EWI	£77.38
10 year Insurance Backed Guarantee for EWI for non-funded installations	£57.24
25 year ECO 'Appropriate Guarantee' for IWI	£77.38
10 year Insurance Backed Guarantee for IWI for non-funded installations	£57.24

The above premium rates are fully inclusive of Insurance Premium Tax at the current rate of 6%. Please note that VAT does not apply to these products.

### WHAT THIS MEANS:

1. When you are tendering for work in respect of a group/street of homes, you have an insured guarantee solution for each of the properties through Kinnell ECO, irrespective of whether the properties have the right to funding.
2. You can purchase all of your insurance backed guarantees from one place. Whether you are installing ECO funded replacement boilers, ECO funded insulation or even privately funded (paid for) insulation; Kinnell ECO has a corresponding product for the situation.
3. If you don't win ECO funded business, our 10 Year Insurance Backed Guarantee for non-funded Insulation contracts is now available, so your customers can be protected with an IBG even if the contract isn't ECO funded.

### WHAT TO DO NOW

If you want to be able to provide any of our new insurance products to your customers, you simply need to contact our administration team on 01292 268020, option 5, and we will go through the simple process with you.

For example, if you carry out non-funded insulation contracts and wish to access the 10 year insurance backed guarantee we will require a copy of your own 10 year guarantee. It's as simple as that.

For further assistance please contact Jordan McCulloch or Barbara Wilson on:

01292 268 020, Option 5  
or email: [info@kinnelleco.co.uk](mailto:info@kinnelleco.co.uk)

(Please confirm your business name in your e-mail)

Kinnell Eco is a trading name of Warranty Services Ltd. Registered in Scotland No. 205797. Registered Office: 37 Carrick Street, Ayr, KA7 1NS. Warranty Services Ltd is authorised and regulated by the Financial Conduct Authority. VAT Registration Number 974 9145 55

 Kinnell Holdings Ltd.

 NATIONAL WARRANTIES



# Winner

## Domestic Refurbishment High Rise

### WORCESTER HIGH RISE WORCESTER

**System Designer:**  
Structherm Ltd

**Contractor:**  
VolkerLaser Ltd

The installation of EWI on the three 12-storey blocks of flats making up Worcester High Rise greatly improved their thermal performance and appearance and saved them from being demolished. Each of the 244 flats now saves around £145 per year in fuel and 610kg in carbon dioxide emissions.

The judges recognised the challenge of insulating the tower blocks without applying any additional load to the poor quality brickwork and were impressed by the subtle 'light-to-dark' colour feature on the façade.



◀ Before

*“A dramatic transformation  
with a huge positive impact  
on the local community”*



# Highly Commended

## RAVENS CRAIG KIRKCALDY

### System Designer:

Alumasc Exterior Building Products Ltd

### Contractor:

ECL Contracts

### Component Supplier:

Rockwool

Ravenscraig is a 1960s 'hard-to-treat' 18-storey tower block where EWI was used to transform the tired façade and significantly boost thermal performance with the result that residents now 'love the new look' and are already noticing lower fuel bills.

Before



After



# Short-Listed

## BACTON TOWER NORTH LONDON

### System Designer:

Saint-Gobain Weber

### Contractor:

Primars Coatings Services Ltd

Before



After



## EWART, SHAFTOE & BRAMWELL COURT NEWCASTLE- UPON-TYNE

### System Designer:

Alesecco (UK) Ltd

### Contractor:

Turner Facilities Management Ltd

Before



After



## NORTHFIELD HOUSE BRISTOL

### System Designer:

Alumasc Exterior Building Products Ltd

### Contractor:

Rateavon Ltd

Before



After



**Structherm**  
Greener | Warmer | Stronger

## EXTERNAL WALL INSULATION SPECIALISTS FOR NON-TRADITIONAL AND HIGH RISE SOCIAL HOUSING.

Structherm's unique Structural EWI system is a cost-effective method of extending the life of defective buildings whilst also improving the appearance and thermal efficiency.



### St Clements Close, Worcester

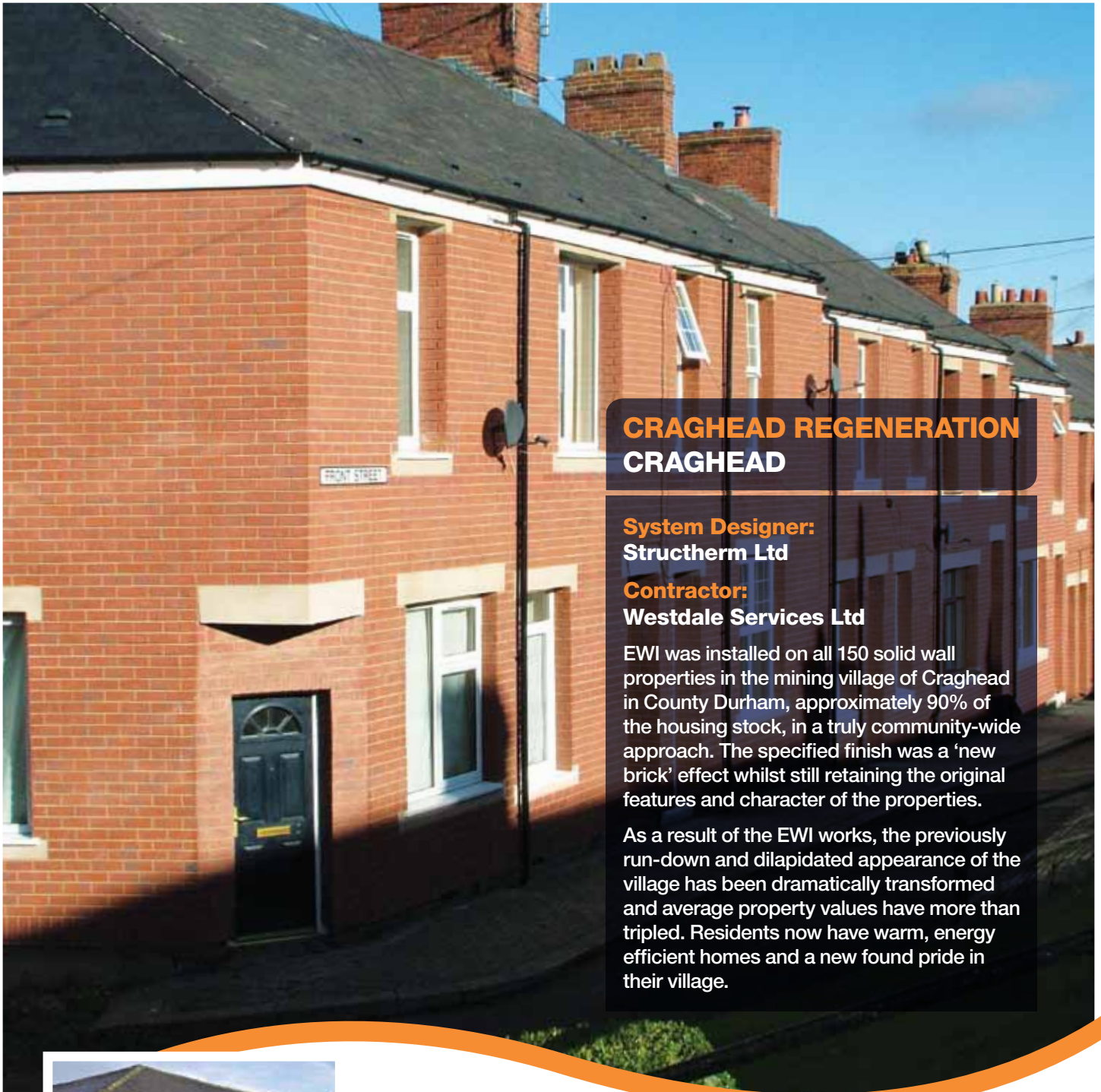
Shortlisted in the INCA  
awards Domestic  
Refurbishment  
High Rise category.

Structherm Ltd, Bent Ley Road, Meltham, Holmfirth, West Yorkshire, HD9 4AP  
t: 01484 850098 f: 01484 851388 e: info@structherm.co.uk  
www.structherm.co.uk



# Winner

## Domestic Refurbishment Low Rise (6 houses or more)



### CRAGHEAD REGENERATION CRAGHEAD

**System Designer:**  
Structherm Ltd

**Contractor:**  
Westdale Services Ltd

EWI was installed on all 150 solid wall properties in the mining village of Craghead in County Durham, approximately 90% of the housing stock, in a truly community-wide approach. The specified finish was a 'new brick' effect whilst still retaining the original features and character of the properties.

As a result of the EWl works, the previously run-down and dilapidated appearance of the village has been dramatically transformed and average property values have more than tripled. Residents now have warm, energy efficient homes and a new found pride in their village.



◀ Before

*“The transformation of the area is incredible and this is a perfect example of the magnitude of what can be achieved with EWl ”*



# Highly Commended

## ST JOAN'S HOUSE NORTH LONDON

### System Designer:

Saint-Gobain Weber

### Contractor:

Aspiration Energy

An EWI system featuring natural brick slips in antique red was used to improve the thermal performance of St Joan's House whilst restoring the original appearance of the property which is situated in a conservation area. The U-value improved significantly from 2.13 W/m<sup>2</sup>K to 0.30 W/m<sup>2</sup>K and the project is a stunning example of what is possible with EWI on buildings that need to be managed in a sensitive manner.



# Short-Listed

## STERTE COURT POOLE

### System Designer:

SPSenvirowall Ltd

### Contractor:

C&P Plastering Contractors Ltd

Before



After



## TELFORD & WREKIN TELFORD

### System Designer:

Alumasc Exterior Building Products Ltd

### Contractor:

Westdale Services Ltd

Before



After



## BURBANK STREET HARTLEPOOL

### System Designer:

Wetherby Building Systems Ltd

### Contractor:

Sykes Specialist Contracting Ltd

Before



After



## PARK ROAD FLATS BLACKRIDGE

### System Designer:

Alumasc Exterior Building Products Ltd

### Contractor:

CCG (Scotland) Ltd

Before



After



# Westdale



Shaded Brick Render & Feature Stonework, Craghead, Co. Durham.

We believe every project we undertake is done to our very own high standards and it is nice to know that this can help our customers achieve their goals.

Westdale Services are one of the UK's leading EWI installers and has the proven ability to fully deliver regeneration and EWI on major estates of 1,000's of properties. It has close and established relationships with fund providers to facilitate major schemes.

Main Office Westdale Services Ltd, Doncaster Road, Askern, Nr. Doncaster, DN6 9JD, Tel 01302 700700 Fax 01302 700706

#### North East Area Office

Westdale Services Ltd  
Unit 19, Dockin Road,  
Armstrong Industrial Estate,  
Washington, NE37 5PF  
Tel 01914 172074 Fax 01914 174293

#### North West Area Office

Westdale Services Ltd  
Unit 11, Nelson Business Park,  
Long Lane, Liverpool, L9 7BN

#### Midlands Area Office

Westdale Services Ltd  
Unit 203, Quantway Business Park,  
Hadley Park West, Telford, TF1 6AL  
Tel 01952 877926 Fax 01952 670017

#### Wales Area Office

Westdale Services Ltd  
Unit 4, Penrhyn Industrial Estate,  
Pontypool, NP4 6YH  
Tel 01952 877926 Fax 01952 670017

e-mail: [support@westdaleservices.co.uk](mailto:support@westdaleservices.co.uk) • [www.westdaleservices.co.uk](http://www.westdaleservices.co.uk)



# SYKES

Specialist Contracting Ltd

Working together to deliver award winning projects



INCA award finalists 2013, 2014, 2015 and award winners 2010 and 2013.  
Installers of premium Insulated Render, Brick slip & Marley Eternit cladding systems

Sykes Specialist Contracting  
Design Works, William St, Felling, Gateshead, Tyne & Wear NE10 0JP

Find out more about our work, or contact us on:  
t: 0191 423 6200  
e: [chris@sykessc.com](mailto:chris@sykessc.com)  
w: [www.sykessc.com](http://www.sykessc.com)







## Let's talk durable render spars

The ongoing drive to improve the energy efficiency of our existing housing stock is creating a demand for attractive external wall insulation systems. Using render spars from Brett Specialized Aggregates is a great way to create an attractive and durable finish.

Don't settle for second best. **Talk to us.**

Call **0845 60 80 572**  
...and talk to us direct

Alternatively, email us at:  
[sturryenquiries@brett.co.uk](mailto:sturryenquiries@brett.co.uk)

 Brett Landscaping Ltd

 @brettpaving

 BrettPaving



Aliva UK's EWI delivers a crisp, contemporary finish for energy-conscious building projects from hotels to schools and housing association portfolios.

Our highly flexible Termok8® range includes a wide spectrum of standard colours. Or choose a colour more personal to your project with our bespoke colour matches or strong colours palettes.

We are proud to be both an INCA and NIA member. Our systems are BBA approved and have been awarded the Fraunhofer Institut fur Bauphysik certification for algae and fungal resistant coatings.



# Winner

## Domestic Refurbishment Low Rise (5 houses or fewer)

### CEFN ROAD BLACKWOOD

**System Designer:**  
SPSenvirowall Ltd

**Contractor:**  
SERS Energy Solutions Ltd

Despite being finished to a high standard on the inside, this pair of semi-detached three-bedroomed homes on Cefn Road in South Wales were cold and costly for the occupants as well as run-down on the outside. The owner was keen to level out the exterior wall, keep any existing detailing, and incorporate new features to transform its appearance.

As part of the EWI installation, Bath stone cornice was used to replicate the design of the existing brick dental course down the sides of the property and Bath stone quoin details, decorative Bath stone panels and powder coated sills were added to remodel and refresh the façade. Not only has the thermal efficiency of these properties improved but they have become the talking point of the street!



◀ Before

*“This project demonstrates impressive detailing which is not easy to do”*



# Highly Commended

# Short-Listed

## MESDERWEN NEWPORT

### System Designer:

SPSenvirowall Ltd

### Contractor:

SERS Energy Solutions Ltd

This stunning project involved the refurbishment of a 1960s three-bedroomed bungalow together with an extension. The EWI installation held the two parts of the project together by remodelling and updating the façade and it also provided the thermal benefits and energy savings the owners were looking for.

Before



After



## YEW HOUSE HASLEMERE

### System Designer:

Alsecco (UK) Ltd

### Contractor:

ECL Contracts

Before



After



## CHARLECOMBE ROAD BRISTOL

### System Designer:

Alumasc  
Exterior Building  
Products Ltd

### Contractor:

Rateavon Ltd

Before



After



In new-build schemes, insulating on the external walls can be combined with simple and reliable modern methods of construction, providing cost effective, fast-track build programmes and attractive façades. The ever increasing thermal requirement of building regulations can be met and exceeded by using the high performance **weber.therm** EWI systems.



# Winner

## Domestic New Build

### BROOKWAY & BENNETT SQUARE EXETER

**System Designer:**  
Alsecco (UK) Ltd

**Contractor:**  
PRS Group

The developments of Brookway and Bennett Square were built as part of a strategy to provide more council homes in order to tackle fuel poverty in Exeter. The properties were designed to the Passivhaus Standard, using EW1 to keep residents' fuel bills to a minimum.

The Passivhaus homes create thermal comfort ensuring a healthier and more ambient indoor climate, and residents have been given advice on how to maximise the benefits of their new energy efficient homes. This leading project provided a low-carbon solution that not only helps to lift families out of fuel poverty but protects against climate change.

### Short-Listed

#### BATH SPA UNIVERSITY BATH

**System Designer:**  
SPSenviowall Ltd

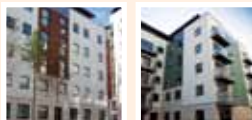
**Contractor:**  
Woodman Bros Ltd



#### KEW BRIDGE WEST BRENTFORD

**System Designer:**  
SPSenviowall Ltd

**Contractor:**  
Stanmore Contractors Ltd



*“Great-looking properties that families will be very happy living in”*

#trusttheexperts



A certified Passivhaus component

Adopting a fabric first approach, Gale & Snowden Architects specified alsecco's Basic 1 external wall insulation system for the construction of 14 Passivhaus units in Exeter.

## External wall insulation | alsecco

Passivhaus Scheme, Exeter

alsecco UK Ltd | Tel: 01785 818998 | Email: [marketing@alsecco.co.uk](mailto:marketing@alsecco.co.uk) | Web: [www.alsecco.co.uk](http://www.alsecco.co.uk)







**STANMORE**

**Stanmore Contractors Limited** is one of the UK's leading interior and exterior fit-out subcontractors. With a £117M annual turnover 2014-15, Stanmore has worked with the majority of the largest Developers and Main Contractors in the South East of England.

Stanmore is therefore able to combine 50 years' experience in construction methods with acquired expertise to become one of the most recognised brand names in today's market.

As a result, Stanmore is not only able to offer a range of drywall partitions, wall lining, screed and ceilings but also lightweight steel frames, insulated external render systems, through colour render, cladding systems, windows, doors, curtain walling structural steelwork, architectural metalwork and coping fascias.

Experience has seen Stanmore work on a diversity of construction projects, from residential houses and flats to complex schools, hospitals, community buildings, industrial warehousing and high-rise commercial / residential units.



**Stanmore Contractors Limited** Stanmore House, Gyproc Business Park, Church Manorway, Erith, Kent DA8 1DE

T 01322 446446 F 01322 448448 E mail@stanmoreltd.co.uk www.stanmoreltd.co.uk

Registered office as above Registered in England no. 02754550 VAT no. 625560641



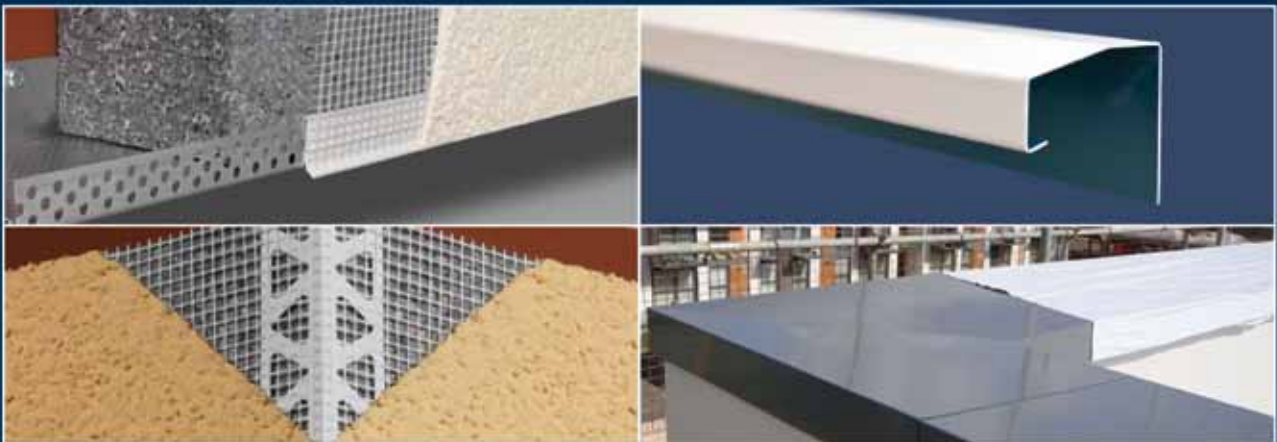
# WEMICO

*Market leaders in the manufacture of Beads Profiles, Trims and Flashings for External Rendering & External Wall Insulation Systems.*

Next day delivery on many products • Made to measure fabrication service

On site estimating service • Comprehensive range available in:

**STAINLESS STEEL • POWDER COATED GALVANISED STEEL • PVC • ALUMINIUM**



**WESTERN EXPANDED METAL INDUSTRIES COMPANY LTD.**

*Matthew Lane, Hoo Farm Industrial Estate, Kidderminster, DY11 7RA*

Tel: 01562 820123 • Fax: 01562 822012 • Email: sales@wemico.co.uk

**w w w . w e m i c o . c o m**





sto

I know Sto

As one of the UK's leading Drylining and Façade specialist subcontractors, Stammore has known Sto for over ten years. Commercial Director Peter Baker tells us that when it comes to working with the best, he's happy to know Sto:

*"Sto understands the challenges we face. I know that when their technical team is involved at the point of specification we will get the best solution. Once on site they continue to work with us and give us any ongoing support we need. That is excellent reassurance when we are involved with such large and complex projects."*

To know more about Sto simply visit [www.sto.co.uk](http://www.sto.co.uk), call our friendly team on 0141 892 8000 or email [knowmore@sto.com](mailto:knowmore@sto.com)

External wall insulation

Rainscreen cladding

Render systems

Interiors

Acoustics

Those who know. **know Sto.**

[www.sto.co.uk](http://www.sto.co.uk)

# Winner

## Non-Residential

### **NORTHUMBRIA SPECIALIST EMERGENCY CARE HOSPITAL CRAMLINGTON**

**System Designer:**  
Dryvit UK Ltd

**Contractor:**  
Horbury Building Systems

The Northumbria Specialist Emergency Care Hospital was the first of an innovative new model of emergency care facilities to be built in the UK. This ambitious and attractive new build project achieved an impressive thermal performance of 0.19 W/m<sup>2</sup>K and provided a high quality white and blue smooth render finish as required by the complex design.

Dryvit worked closely with the other parties involved in the project to ensure that the EWI system met the stringent requirements set out by both building control and the NHS whilst still delivering a superb aesthetic finish.



*“This unusual and technically challenging EWI project really makes a statement”*



# Highly Commended

# Short-Listed

## CARDIFF CHILDREN'S HOSPITAL CARDIFF

**System Designer:**

Sto Ltd

**Contractor:**

Joyner PA (Cymru) Ltd

The installation of EWI on the new £35 million Children's Hospital in Cardiff has created a bright, colourful and welcoming facility for children which has received high praise from both the hospital and the public alike. This well-managed project overcame difficult build tolerances, recesses, fire compartments and expansion joints to achieve a high standard of finish which requires minimal maintenance.



## BEXLEY COLLEGE SOUTH EAST LONDON

**System Designer:**

Sto Ltd

**Contractor:**

Stanmore Contractors Ltd



## WARWICKSHIRE COLLEGE ROYAL LEAMINGTON SPA

**System Designer:**

Sto Ltd

**Contractor:**

Joyner PA (Cymru) Ltd



**JOYNER GROUP**

Wales Office: Tel: 01633 614460  
 Bristol Office: Tel: 01275 377990  
 Email: enquiries@joynergrouppa.co.uk  
 www.joynergrouppa.co.uk

AGS REGISTERED ISO 9001  
 AGS REGISTERED ISO 14001  
 AGS REGISTERED ISO 14001

- EXTERNAL WALL INSULATION
- INTERNAL WALL INSULATION
- RAIN SCREEN CLADDING
- CAVITY EXTRACTION
- ROOFING



'ENHANCING THE REPUTATION OF OUR CLIENTS'

**sb** S and B EPS  
Limited  
Manufacturers of expanded polystyrene

**Lambdatherm®**  
(Graphite enhanced EPS)



**LAMBATHERM® MANUFACTURED WITH  
THE NEW POLYMERIC FLAME RETARDANT**



## **REST EASY KNOWING THE RIGHT PRODUCT HAS BEEN USED**

**A SPECIALISED EXPANDED POLYSTYRENE BEAD FOR  
EXTERNAL WALL INSULATION**

- Increased stabilisation and thermal enhancement
- A+ green guide rating
- A product made of Neopor® backed by German engineering **BASF**
- Tested to comply with ETAG 004



Follow us on facebook  
and twitter

Email: [company@sandbeps.com](mailto:company@sandbeps.com)

Visit: [www.sandbeps.com](http://www.sandbeps.com) / [www.lambdatherm.com](http://www.lambdatherm.com)



# WE'RE HOT

Jablite is the UK's  
leading manufacturer  
of **EPS insulation**

- 100% Recyclable
- A+ rated in the BRE Green Guide
- 98% air
- Lifelong performance
- Outstanding product quality

**For information contact:**  
Sarah Fry  
National Business Manager  
**T: 07785 624002**



# Winner

## Sustainability Award

### KILWAUGHTER CHEMICAL COMPANY LTD

Kilwaughter Chemical Company Ltd takes pride in its local environment and environmental considerations are an integral part of its business practice. Its headquarters is situated next to the Antrim Plateau, an Area of Outstanding Natural Beauty, and the opportunity was taken to re-establish an area of pristine native woodland and grassland. Over 20,000 trees have been planted and the carefully managed land now offers a wide range of habitats for a variety of plants, animals and birds.

*“Significant care and attention has clearly been given to the biodiversity of the surrounding countryside”*

### Short-Listed

MAPEI UK LTD  
STO LTD

## World-leading manufacturer of adhesives & chemical building products.

**Visit [mapei.co.uk](http://mapei.co.uk) for a range of typical product systems for every-day installations.**

- Adhesives for resilient floor coverings
- Anti-crack flooring systems
- Balcony systems
- Coloured Grouts, Adhesives & Sealants
- EWI (External Wall Insulation) & Coatings
- Levelling Compounds
- Resin & Cementitious flooring products
- Wood Flooring systems
- Underfloor Heating systems
- Waterproofing systems



[www.mapei.co.uk](http://www.mapei.co.uk)



# Winner

## Training Award

### SPSENVIRIOWALL LTD

SPSEnvirowall has partnered with Bron Afon Housing Association and Afon Community Trust to create and deliver a hands-on learning and employment programme called 'Trade That Works'. This flexible programme focuses on supporting young people not in education, employment or training (NEETs) to gain core skills, qualifications and confidence in order to break the poverty cycle. 80% of candidates who completed the programme went onto further education, volunteering or employment.

### Highly Commended

#### ECL CONTRACTS

ECL Contracts places considerable emphasis on qualifying its workforce and staff training is an integral part of its business. In 2014, ECL invested in 371 days of training for office and site staff, 391 NVQs and created an entire floor dedicated to training.

### Short-Listed

#### ASTLEY FACADES (UK) LTD

## CITB is proud to support the INCA Awards 2015

People are vital to construction and the economy. We want to inspire the next generation to join our industry.

We're putting people and skills first to make sure we can meet demand and deliver growth now and in the future.







## With a network of local branches SPSenvirowall is always right up your street.

At SPSenvirowall we understand contractors. So we know that when you're on the job you need solutions that are close to hand. That's why we're the only supplier of external and solid wall insulation systems with a network of local branches providing you with a huge range of stock and specialist advice.

We also offer specialist training at our local branch based academies across the country – so you can be confident that you're installing our systems in a way that gets the best out of them.



For a quote or to find your local branch  
Call our team on **01535 661633**  
or visit us at [spsenvirowall.co.uk](http://spsenvirowall.co.uk)





**At Weber, we believe that what matters most in the construction industry is to care about people and their environment.**

System-built non-traditional or traditional construction, low or high rise – **Weber** has a rich background of providing EWI systems for refurbishment projects going back 40 years. **Weber** External Wall Insulation is suitable for all types of properties and can significantly lower heating bills and carbon emissions as well as making the properties warmer and weather-tight whilst a choice of colour and texture will enhance the appearance of buildings and the local area substantially.



@SGWeberUK



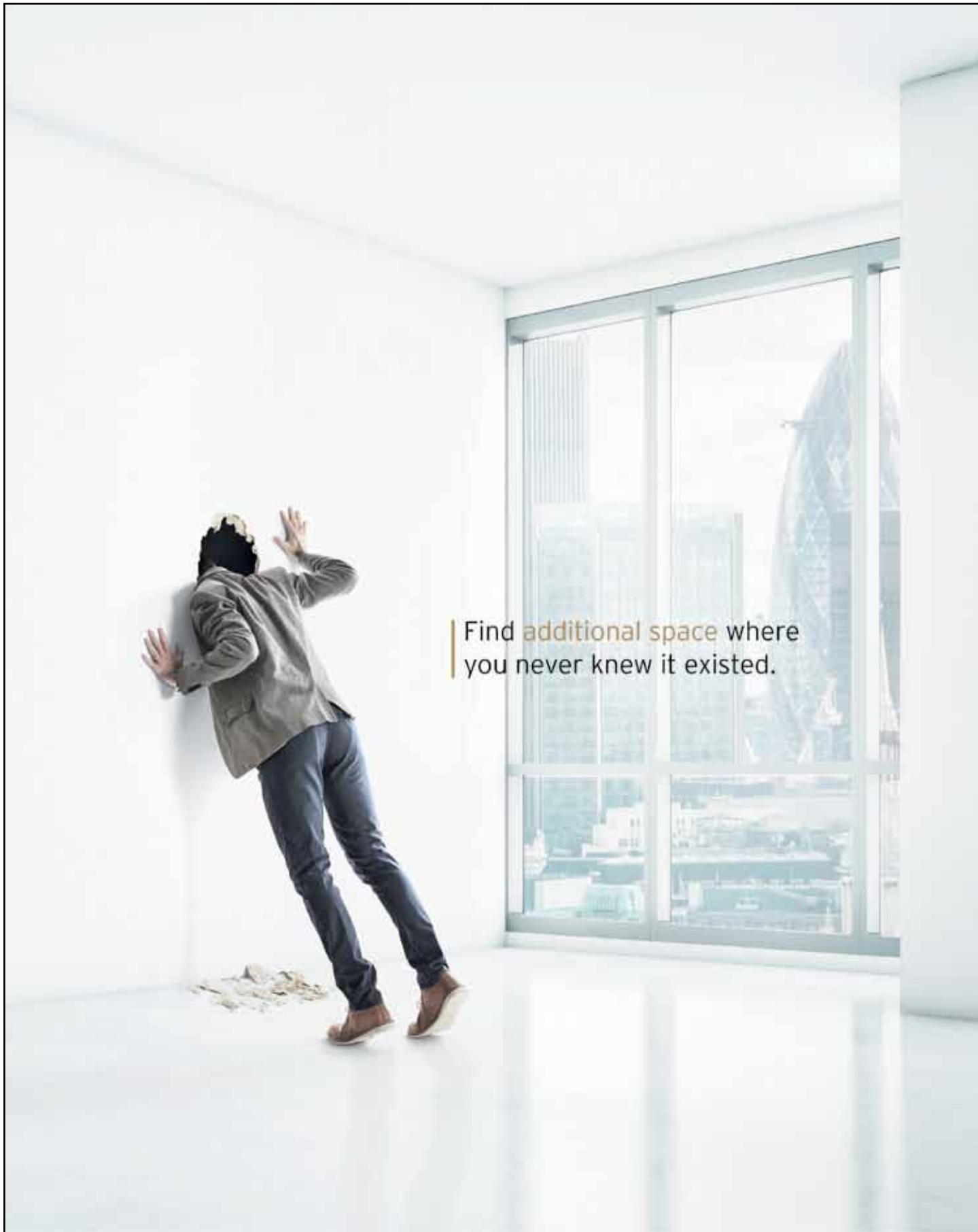
www.netweber.co.uk



enquiries@netweber.co.uk







Find **additional space** where  
you never knew it existed.

By releasing space from within the walls, you could be unlocking investment potential for your clients in commercial real estate.

Kingspan **Kooltherm**® wall insulation solutions deliver superior thermal performance with a thinner profile – creating more internal floor area to generate greater rental income. It's well worth looking into.

Visit our website and **discover the real value of space.**

[www.kingspaninsulation.co.uk/realvalueofspace](http://www.kingspaninsulation.co.uk/realvalueofspace)

